

# What is the most suitable temperature for rooftop photovoltaic panels



## Overview

---

The ideal sweet spot for most residential solar installations is around 77°F (25°C), which manufacturers use as the standard test condition temperature. At this temperature, panels can operate at their rated efficiency levels, typically converting 15-20% of sunlight into.

## What is the most suitable temperature for rooftop photovoltaic pan

---

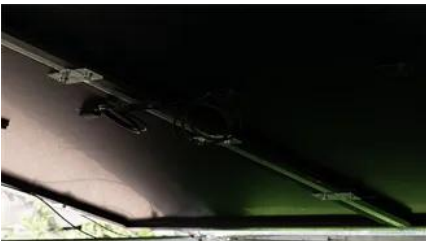


### superlative degree

I've recently come across a novel called A most wanted man, after which being curious I found a TV episode called A most unusual camera. Could someone shed some light on how to use "a most" and

### grammar

Welcome to the most wildest show on earth. Someone pointed out the most wildest and I was wondering if it was OK to use most with a word that ends in -est together.



### What Is the Optimal Temperature for Solar Panel Performance? Tips

Discover how temperature impacts solar panel efficiency. Learn why 77°F (25°C) is the optimal range, how excessive heat can reduce performance, and explore strategies like cooling systems and proper

### Most is vs most are

Most is what is called a determiner. A determiner is "a word, such as a number, article, personal pronoun, that determines (limits) the meaning of a noun phrase." Some determiners can only be



[Effect of temperature on the performance of solar panels](#)



Before entering the market, most PV modules are tested under Standard Test Conditions (STC), which include solar panels temperature of 25 degrees Celsius or 77 degrees Fahrenheit.

### **"most" vs "the most", specifically as an adverb at the end of sentence**

Which one of the following sentences is the most canonical? I know most vs. the most has been explained a lot, but my doubts pertain specifically to which one to use at the end of a sentence.



### **The Impact of Temperature on Solar Panels: Optimize your Production**

Find out how temperature affects the yield of your photovoltaic panels, and what solutions you can adopt to limit losses and optimize your solar electricity production.

### **How do you hyphenate a prenominal compound containing "most" (e.g**

This question is similar to: Hyphenation of "second most northerly". If you believe it's different, please edit the question, make it clear how it's different and/or how the answers on that



### **meaning**

Here "most" means "a plurality". Most dentists recommend Colgate toothpaste. Here it is ambiguous about whether there is a bare majority or a comfortable majority. From the 2nd Language Log link: I

## [Your Guide to Solar Panel Temperature and Efficiency](#)

The panels have their solar panel temperature coefficient, where for every degree Celsius above 25°C, PV batteries lose about 0.4% of their



### ["Most of which" or "most of whom" or "most of who"?](#)

Since "most of \_\_\_\_" is a prepositional phrase, the correct usage would be "most of whom." The phrase "most of who" should probably never be used. Another way to think about the

### **What does the word "most" mean?**

Most is defined by the attributes you apply to it. "Most of your time" would imply more than half, "the most time" implies more than the rest in your stated set. Your time implies your total



### [Solar Panel Efficiency vs. Temperature \(2026\) , 8MSolar](#)

One of the most significant yet often misunderstood factors is temperature. In this guide, we'll explore the relationship between solar panel

### **"Most" vs. "most of"**

During most of history, humans were too busy to think about thought. Why is "most of history" correct in the above sentence? I could understand the difference between "Most of the





## [What is the Optimal Temperature for Solar Panels Explained](#)

Explore what is the optimal temperature for solar panels, common myths, challenges, and FAQs to maximize solar energy efficiency.

## How Temperature Affects Your Solar Panel Output (With Performance

Understanding how temperature affects solar panel efficiency is crucial for maximizing your renewable energy investment. As we've explored, solar panels generally perform best between



## [Solar Panel Operating Temperature: Complete Guide](#)

The ideal solar panel operating temperature remains 25°C (77°F) under Standard Test Conditions. However, panels maintain excellent efficiency

## grammar

The adverbial use of the definite noun the most synonymous with the bare-adverbial most to modify an entire clause or predicate has been in use since at least the 1500s and is an integral



## [How Does Temperature Affect Solar Panels?](#)

However, it is generally proven that the ideal operating temperature for an average solar panel is 77 degrees Fahrenheit or 25 degrees Celsius. As a

## Contact Us

---

For catalog requests, pricing, or partnerships, please visit:  
<https://bachelorpartyvenue.co.za>