

New energy telecom wants to replace the entire battery cabinet



Overview

Learn effective telecom battery replacement strategies to reduce downtime, lower costs, and extend battery life using lifecycle planning, in-grid replacement, and modular designs.

New energy telecom wants to replace the entire battery cabinet

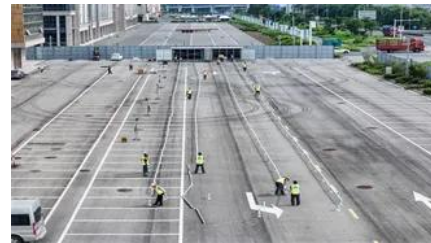


[Purcell Systems , Equipment Enclosures & Cabinets](#)

FlexSure 3030 BLS solution architecture allows the rapid creation and growth of virtually any outdoor cabinet configuration by leveraging pre-engineered

[Universal telecom power cabinets for replacement projects](#)

Universal telecom power cabinets are important for steady telecom services, especially during updates or replacements. Picking a cabinet that matches your system and handles bad



What is the 'new' keyword in JavaScript?

The new keyword in JavaScript can be quite confusing when it is first encountered, as people tend to think that JavaScript is not an object-oriented programming language. What is it? What problems

When to use "new" and when not to, in C++?

You should use new when you wish an object to remain in existence until you delete it. If you do not use new then the object will be destroyed when it goes out of scope.





Battery Swapping Systems for Telecom Sites , Huijue Group E-Site

Imagine a hurricane knocks out power to 200 telecom towers simultaneously. How quickly could operators restore service? This scenario underscores the critical role of battery swapping systems in

Telecom Battery Cabinet , Huijue I&C Energy Storage Solutions

Many telecom companies, especially in emerging markets, still deploy lead-acid batteries to cut upfront costs. But here's the kicker: these systems require replacement every 3-5 years and occupy 60%



[Difference between 'new operator' and 'operator new'?](#)

A new expression is the whole phrase that begins with new. So what do you call just the "new" part of it? If it's wrong to call that the new operator, then we should not call "sizeof" the sizeof

Nokia Energy Solutions

All-in-one power cabinets allow the outdoor installation of the baseband, transmission equipment, rectifiers and batteries. They are available in a range of sizes and can be delivered to site with the



Modular Lithium Battery Systems for Scalable Telecom Deployments

Unlike traditional single-unit battery banks, a modular system is flexible and scalable - operators can easily add, remove, or replace

individual modules without shutting down the entire

[How does the new operator work in JavaScript?](#)

The new operator uses the internal [] method, and it basically does the following: Initializes a new native object Sets the internal [] of this object, pointing to the Function prototype



New site design and philosophy for Stack Overflow: Starting February

Ah, but new experts will rise up and embrace the new, friendly Stack Overflow that they have always wanted. And maybe rediscover the same things the bitter, hateful old guard found.

[Telecommunications Battery Solutions: Reliable](#)

The telecom industry relies heavily on 5G technology to provide backup power during outages, making it a critical component of



What is the Difference Between 'new object()' and 'new {}' in C#?

Note that if you declared it `var a = new { };` and `var o = new object();`, then there is one difference, former is assignable only to another similar anonymous object, while latter being object, it

new operator

In the specific case of throw, throw new() is a shorthand for throw new Exception(). The feature was introduced in c# 9 and you can find the documentation as Target-typed new expressions.



[Telecom Battery Backup Systems: Designing Reliable Power](#)

Whether you're a fleet operator managing remote telecom sites or an integrator seeking long-life battery solutions, this guide will equip you with the technical and operational insights you need.

Telecom

The Green Cubes Guardian Battery Unit (GBU) is a 48V 19" rack-mountable Lithium ion Battery Backup Unit designed to be used with any power system. The GBU Series is designed for data center and



Telecom Battery Replacement Strategies: Minimizing Downtime and

Learn effective telecom battery replacement strategies to reduce downtime, lower costs, and extend battery life using lifecycle planning, in-grid replacement, and modular designs.

javascript

83 new() describes a constructor signature in typescript. What that means is that it describes the shape of the constructor. For instance take {new(): T; }. You are right it is a type. It is the type of a class





[Is JavaScript's "new" keyword considered harmful?](#)

It is NOT 'bad' to use the new keyword. But if you forget it, you will be calling the object constructor as a regular function. If your constructor doesn't check its execution context then it won't notice that 'this'

Contact Us

For catalog requests, pricing, or partnerships, please visit:
<https://bachelorpartyvenue.co.za>