

# Is the battery storage cabin explosion-proof



## Overview

---

A battery storage cabinet provides more than just organized space; it's a specialized containment system engineered to protect facilities and personnel from the risks of fire, explosion, or chemical leakage.

## Is the battery storage cabin explosion-proof

---



### [White Paper on Active Ventilation Explosion-Proof System](#)

When thermal runaway occurs within a battery container and propagates across units, it can lead to catastrophic chain-reaction disasters at the station level. Over the past nine years (2015-2024),

### [Low battery charge error , Volvo V40 Forums](#)

Hello everyone, I just bought my first car, a 2014 Volvo V40 T3, and a warning appears on the dashboard that says 'low battery charge.' The car is recently



### **Low Battery warning , Volvo V40 Forums**

Battery is easy to do yourself if you're at all handy around a screw driver and a spanner, just remember to reset the battery management system before you start using the car or it'll kill the

### [Battery Room Safety: Essential Safeguarding Strategies](#)

Minimum explosion proof rated lights (and switch if inside the room) is an effective safeguard, as is using a NEMA 7 receptacle in the room if one is required.





## Main Battery Change

Going to change the service battery in my 15 V40cc D2. Anything I need to be ware of or look out for ??

## Secondary Battery

My main battery just died, had it replaced with same, and car kept giving me Battery charging, so no stop start. When stop/start worked, it was for about 10 sec, and car would start, with



## Battery Recycling for Businesses

Battery Recycling for Businesses Use the chart below to determine how to handle used batteries generated by your business. Batteries that are considered hazardous must be recycled or managed

## Low battery charge message

The low battery charge message relates to the main battery. On vehicles with stop/start systems and intelligent alternators, the vehicle battery is designed to operate at around 80% SOC, to

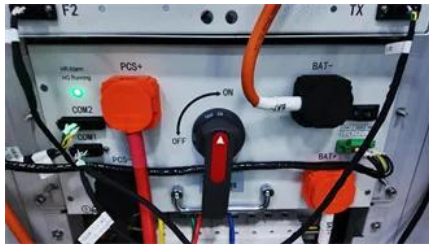


## [Multiple Warning Lights/Error Messages/Battery deterioration](#)

TBH I would look at a replacement battery on the back of that info - but can't you get one from where you bought it? I don't know what a compliance centre is but does the vehicle come with

## Replacement battery

Hiya, I have an early 2014 D2 cross country automatic. It keeps complaining about battery level, even after our (rare but very long drives). So I think the battery is shot. Funnily, when I put my



## Battery issues

I've had both batteries replaced (with the correct models), done a 100 mile trip, overnight smart battery charge, charging voltage is fine, system messages cleared but I am still getting "low

## Main Battery Replacement

Since that battery also supplies power to the ECU memory when the car is switched off, as well as powering the stop/start system, don't ignore it. Like the main battery, Volvo recommend



## New Battery

So I think the time has come to replace the main battery. Its the original Volvo 70ah EFB battery that was on the car from new in 2016.. The car starts fine but I keep getting the "Low Battery

## Household Battery Recycling

Household battery recycling locations Lead-acid batteries, or "automotive type batteries," are banned from disposal. Consumers may bring lead-acid batteries to any Wisconsin retailer that sells these



## Contact Us

---

For catalog requests, pricing, or partnerships, please visit:  
<https://bachelorpartyvenue.co.za>