

# Is energy storage power station a manufacturing industry



## Overview

---

Energy storage systems (ESS) - including lithium-ion batteries, pumped hydro, and thermal storage - are primarily manufactured products.

## Is energy storage power station a manufacturing industry

---



### [MIT Energy Initiative conference spotlights research](#)

At the MIT Energy Initiative's Annual Research Conference, industry leaders agreed collaboration is key to advancing critical technologies amidst a changing energy landscape.

### [Explained: Generative AI's environmental impact](#)

MIT News explores the environmental and sustainability implications of generative AI technologies and applications.



### **Is Energy Storage Power Generation Part of the Manufacturing**

Energy storage systems (ESS) - including lithium-ion batteries, pumped hydro, and thermal storage - are primarily manufactured products. While their application spans utilities and renewables, the

### **New facility to accelerate materials solutions for fusion energy**

The new Schmidt Laboratory for Materials in Nuclear Technologies (LMNT) at the MIT Plasma Science and Fusion Center accelerates fusion materials testing using cyclotron proton beam





## MIT engineers create an energy-storing supercapacitor from ancient

MIT engineers created a carbon-cement supercapacitor that can store large amounts of energy. Made of just cement, water, and carbon black, the device could form the basis for

## A new approach could fractionate crude oil using much less energy

MIT engineers developed a membrane that filters the components of crude oil by their molecular size, an advance that could dramatically reduce the amount of energy needed for crude oil

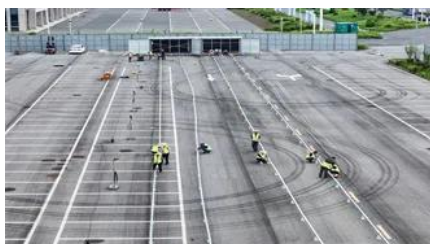


## Giving buildings an "MRI" to make them more energy-efficient and

Founded by a team from MIT, Lamarr.AI utilizes drones, thermal imaging, and AI to identify energy waste and structural issues in buildings and recommend retrofits.

## [Energy Storage Powers American Manufacturing](#)

Across battery systems, cells, and critical minerals, energy storage is rapidly building a full-stack, end-to-end American supply chain. Energy storage now represents one of the fastest-growing advanced



## Next-generation geothermal energy: Promise, progress, and challenges

Geothermal energy, a clean, continuous energy source accessible in many locations, has been

slow to catch on. Nearly 2,000 years ago, the Romans made extensive use of geothermal

## American Energy Storage Manufacturing Hits Historic Milestone

Across our 11-state region, energy storage is generating jobs in fabrication, power electronics, critical minerals extraction, and advanced manufacturing - including at facilities in



## How artificial intelligence can help achieve a clean energy future

A look at how AI can be used to help support the clean energy transition by helping to manage power grid operations, plan infrastructure investments, guide the development of novel

## Battery Energy Storage Systems Report

With a storage capacity of 185 MW and capable of discharging 565 megawatt hours (MWh) of energy, the system enhances grid stability and facilitates the integration of renewable energy sources like



## [What are the factory energy storage power stations?](#)

Factory energy storage power stations are large-scale facilities designed to store energy generated from various sources for later use, primarily

## [Making clean energy investments more successful](#)

New research emphasizes the importance of well-validated models and forecasting tools in evaluating choices for investments in clean energy technologies and policies by governments and



## **Study: Fusion energy could play a major role in the global response to**

Investigators in the MIT Energy Initiative and the MIT Plasma Science and Fusion Center have found that - depending on its future cost and performance - fusion energy has the potential

## **Contact Us**

---

For catalog requests, pricing, or partnerships, please visit:  
<https://bachelorpartyvenue.co.za>