

Internal structure of solar container energy storage system



Overview

A CAES plant is comprised of compressors, turbines, a motor/generator set, and large repositories, e.

Internal structure of solar container energy storage system



INTERNAL definition and meaning , Collins English Dictionary

Internal is used to describe things that exist or happen inside a country or organization. The country stepped up internal security. We now have a Europe without internal borders.

internal

In anatomy and zoology, in general, inner or interior; not superficial; deep-set; away from the surface or next to the axis of the body or of a part: as, the internal carotid or iliac artery; the internal head of the



Unlocking the Internal Structure of Container Energy Storage: A Deep

As global investments in energy storage hit \$33 billion annually , these modular powerhouses are rewriting the rules of grid resilience. Let's crack open their design secrets and see why engineers call

Internal structure of stacked solar container energy storage system

Summary: This article explores the internal architecture of modern energy storage containers, their core components, and how they revolutionize industries like renewable energy and grid management.





[Internal Definition & Meaning, YourDictionary](#)

Internal definition: Of, relating to, or located within the limits or surface; inner.



Internal

Define internal. internal synonyms, internal pronunciation, internal translation, English dictionary definition of internal. adj. 1. Of, relating to, or located within the limits or surface; inner.



Internal Structure of Energy Storage Container: Key Components

internal

of or relating to the inside or inner part: the internal organs of the body. Government of or relating to the domestic affairs of a country:[before a noun] a bureau of internal affairs.



internal adjective

Definition of internal adjective in Oxford Advanced Learner's Dictionary. Meaning, pronunciation, picture, example sentences, grammar, usage notes, synonyms and more.



INTERNAL Definition & Meaning

The meaning of INTERNAL is existing or situated within the limits or surface of something. How to use internal in a sentence.

Summary: This article explores the internal architecture of modern energy storage containers, their core components, and how they revolutionize industries like renewable energy and grid management.

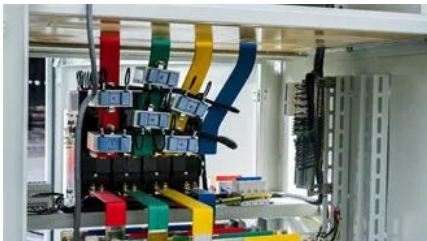


UNLOCKING THE INTERNAL STRUCTURE OF CONTAINER

The liquid-cooled energy storage system integrates the energy storage converter, high-voltage control box, water cooling system, fire safety system, and 8 liquid-cooled battery packs into one unit.

internal

Adjective internal (comparative more internal, superlative most internal) Of or situated on the inside. We saw the internal compartments of the machine. (medicine) Within the body.



internal, adj. & n. meanings, etymology and more , Oxford English

There are 15 meanings listed in OED's entry for the word internal, three of which are labelled obsolete. See 'Meaning & use' for definitions, usage, and quotation evidence.

INTERNAL , English meaning

INTERNAL definition: 1. inside the body: 2. inside a person's mind: 3. inside an object or building: . Learn more.



Contact Us

For catalog requests, pricing, or partnerships, please visit:
<https://bachelorpartyvenue.co.za>