

How many batteries are in a communication base station



Overview

1a shows two lead-acid battery groups in a mobile network base station and each battery group contains 24 cell batteries (the rated voltage of each battery cell is 2v).

How many batteries are in a communication base station



How many batteries are there in each communication base station group

Fig. 1a shows two lead-acid battery groups in a mobile network base station and each battery group contains 24 cell batteries (the rated voltage of each battery cell is 2v).

Many: Definition, Meaning, and Examples

"Many" describes a large quantity of countable items or people, commonly used when the exact total isn't important or known. It is one of the most essential quantifiers in the English language,



[MANY definition and meaning , Collins English Dictionary](#)

You use many to indicate that you are talking about a large number of people or things. I don't think many people would argue with that. Not many films are made in Finland. Do you keep many books

[BATTERY SPECIFICATIONS FOR COMMUNICATION BASE](#)

Subscribe to our technical newsletter for the latest innovations in photovoltaic energy storage systems, BESS solutions, mobile power containers, lithium batteries, EMS management systems, and industry





COMMUNICATION BASE STATION BACKUP BATTERY

Among various battery technologies, Lithium Iron Phosphate (LiFePO₄) batteries stand out as the ideal choice for telecom base station backup power due to their high safety, long lifespan, and excellent

MANY , English meaning

We use the quantifiers much, many, a lot of, lots of to talk about quantities, amounts and degree. We can use them with a noun (as a determiner) or without a noun (as a pronoun).



HOW MANY BATTERIES DOES A COMMUNICATION BASE STATION

Highjoule powers off-grid base stations with smart, stable, and green energy. Highjoule's site energy solution is designed to deliver stable and reliable power for telecom base stations in off-grid or weak

Telecom Base Station Backup Power Solution: Design

Discover the 48V 100Ah LiFePO₄ battery pack for telecom base stations: safe, long-lasting, and eco-friendly. Optimize reliability with our design



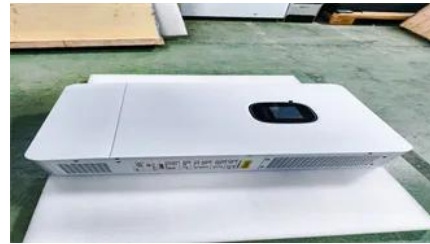
Communication Batteries: Why Telecom Base Stations Have Unique

Most telecom base stations use 48V battery systems, while some legacy or hybrid sites may

have 24V configurations. Lithium systems can be integrated into these architectures with proper

MANY Definition & Meaning

The meaning of MANY is consisting of or amounting to a large but indefinite number. How to use many in a sentence.



Global Communication Base Station Battery Trends: Region-Specific

Integrated base stations are typically larger and require higher capacity batteries, while distributed base stations, being smaller and more numerous, present different power needs.

How many flow batteries are there in a communication base station

Given the various configurations and technologies used, estimating the total weight of energy storage batteries in base stations can be daunting. However, it can be approached



Telecommunication Battery

Valve-regulated sealed lead-acid batteries are currently the most mainstream and widely used lead-acid base station telecommunication

many determiner

Definition of many determiner in Oxford Advanced Learner's Dictionary. Meaning, pronunciation, picture, example sentences, grammar, usage notes, synonyms and more.





[Many Definition & Meaning , YourDictionary](#)

Many definition: Amounting to or consisting of a large indefinite number.

MANY Definition & Meaning , Dictionary

MANY definition: constituting or forming a large number; numerous. See examples of many used in a sentence.



How many batteries are in a communication base station inverter

In this article, we will compare basic and advanced battery communication, discuss the challenge of "good" inverter-battery communication, and what happens when it's

Contact Us

For catalog requests, pricing, or partnerships, please visit:
<https://bachelorpartyvenue.co.za>