

Energy Storage Plant Management System



Overview

The EMS is an energy management platform responsible for controlling power absorption and injection, maintaining the operational efficiency of the BESS, and ensuring its ability to provide grid support services.

Energy Storage Plant Management System



How artificial intelligence can help achieve a clean energy future

A look at how AI can be used to help support the clean energy transition by helping to manage power grid operations, plan infrastructure investments, guide the development of novel

Making clean energy investments more successful

New research emphasizes the importance of well-validated models and forecasting tools in evaluating choices for investments in clean energy technologies and policies by governments and



Giving buildings an "MRI" to make them more energy-efficient and

Founded by a team from MIT, Lamarr.AI utilizes drones, thermal imaging, and AI to identify energy waste and structural issues in buildings and recommend retrofits.

Study: Fusion energy could play a major role in the global response to

Investigators in the MIT Energy Initiative and the MIT Plasma Science and Fusion Center have found that - depending on its future cost and performance - fusion energy has the potential



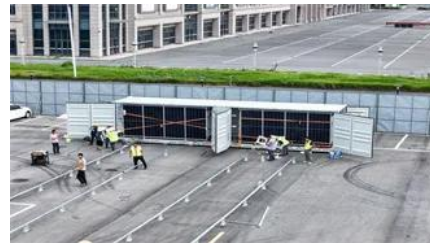


A new approach could fractionate crude oil using much less energy

MIT engineers developed a membrane that filters the components of crude oil by their molecular size, an advance that could dramatically reduce the amount of energy needed for crude oil

Energy management system for modular-gravity energy storage plant

Modular-gravity energy storage (M-GES) plant control system is proposed for the first time. The energy management system of the M-GES plant was first systematically studied. A



Next-generation geothermal energy: Promise, progress, and challenges

Geothermal energy, a clean, continuous energy source accessible in many locations, has been slow to catch on. Nearly 2,000 years ago, the Romans made extensive use of geothermal

MIT engineers create an energy-storing supercapacitor from ancient

MIT engineers created a carbon-cement supercapacitor that can store large amounts of energy. Made of just cement, water, and carbon black, the device could form the basis for



CHAPTER 15 ENERGY STORAGE MANAGEMENT SYSTEMS



[Explained: Generative AI's environmental impact](#)

MIT News explores the environmental and sustainability implications of generative AI technologies and applications.

Energy management systems (EMSs) are required to utilize energy storage effectively and safely as a flexible grid asset that can provide multiple grid services. An EMS needs to be able to accommodate



[MIT Energy Initiative conference spotlights research](#)

At the MIT Energy Initiative's Annual Research Conference, industry leaders agreed collaboration is key to advancing critical technologies amidst a changing energy landscape.

[GPM Energy Management System \(EMS\) - GreenPowerMonitor](#)

Discover our Energy Management System (EMS) to enhance storage and ensure grid code compliance of your Battery Energy Storage System (BESS) power plant.



New facility to accelerate materials solutions for fusion energy

The new Schmidt Laboratory for Materials in Nuclear Technologies (LMNT) at the MIT Plasma Science and Fusion Center accelerates fusion materials testing using cyclotron proton beam

Contact Us

For catalog requests, pricing, or partnerships, please visit:
<https://bachelorpartyvenue.co.za>