

Earthquake-resistant intelligent photovoltaic outdoor cabinets for highways



Earthquake-resistant intelligent photovoltaic outdoor cabinets for h



after an earthquake

After an earthquake, there may be unpredictable aftershocks, landslides and fires. Aftershocks may occur immediately after the earthquake or after days, weeks or even months. Follow instructions from

[WHO scales up emergency response in earthquake-hit Myanmar.](#)

Intensifying support to earthquake-hit Myanmar, the World Health Organization (WHO) has provided nearly 100 tons of medicines, medical devices and tents so far, and is assisting in



Healing in the Open: Stories of Strength and Recovery After the

Aiming to restore essential services and strengthen the resilience of earthquake-affected communities, over 3,100 mothers and newborns have received support through the distribution of

[Outdoor Photovoltaic Telecom Energy Cabinet](#)

Each outdoor photovoltaic telecom energy cabinet is built for harsh outdoor telecom and edge usage, characterized by durability, flexibility, and intelligent control to provide unshakeable power supply.





Lives Rebuilt: Personal Stories from Myanmar's Earthquake Recovery

A community struggling, yet unbroken & WHO's people centered response The hardships these individuals face reflect the wider struggles of millions displaced by the earthquake. Safe water,

Great East Japan Earthquake

Great East Japan Earthquake, 2011 In the early afternoon of 11 March 2011, Japan was rocked by a 9.0-magnitude earthquake that caused widespread damage to the country's eastern



WHO Responds to Nepal Earthquake

Working closely with the government and partners, WHO is supporting to respond to the urgent health needs of the affected population A 6.4 magnitude earthquake hit Nepal's Western

Earthquakes

An earthquake is a violent and abrupt shaking of the ground, caused by movement between tectonic plates along a fault line in the earth's crust. Earthquakes can result in the ground



On the path to recovery: three months after the earthquake in Vanuatu

A 7.3 magnitude earthquake struck Port Vila on 17 December 2024, claimed 14 lives, destroyed critical infrastructure, and displaced over 2000 people who needed to stay in evacuation

[Ip65 100kwh Outdoor Cabinet , ALEXANDRA BESS](#)

Product Quality of 100kWh Mobile Energy Storage Outdoor Cabinet Housed in a weather-resistant IP55 cabinet, it combines a 100kWh LiFePO4 battery pack with 50kW charge/discharge capability,



Outdoor Cabinet , SWA Energy LiFePO4 Battery Storage Systems

Our outdoor cabinets are pre-assembled for quick deployment and can operate reliably under wide temperature ranges. They ensure stable energy storage performance in challenging climates,

Emergency

A strong earthquake of 6.4 magnitude hit Nepal's Western Province of Karnali, shortly before midnight, on 3 November 2023. As of 24 November 2023, 154 people (Female: 83, Male: 71) had died and

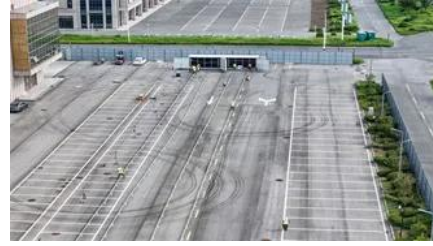


Outdoor Photovoltaic Energy Cabinet

Engineered with reinforced steel enclosure and IP55/IP65 protection class for dust, water, and corrosion resistance in severe climates. Combines high-voltage lithium battery packs, BMS, fire protection,

Myanmar earthquake response 2025

Sagaing earthquake in Myanmar On 28 March 2025, two powerful earthquakes struck central Myanmar's Sagaing Region near Mandalay. The first, with a magnitude of 7.7, occurred at



Contact Us

For catalog requests, pricing, or partnerships, please visit:
<https://bachelorpartyvenue.co.za>