

Comprehensive design of off-grid inverter



Overview

This application note introduces how to implement a single-phase, off-grid inverter with all digital control in a simulation tool and provides a verification method for off-grid control in the PMP23338 TI reference design.

Comprehensive design of off-grid inverter



Off Grid Solar Inverter: Complete Guide to Technology, Design, and

For households, businesses, and remote installations seeking independence from centralized utilities, understanding the function, design, and technical aspects of off grid solar

Implementation of Single-Phase Off-Grid Inverter With Digital

This application note introduces how to implement a single-phase, off-grid inverter with all digital control in a simulation tool and provides a verification method for off-grid control in the PMP23338 TI



Car Insurance Estimator: Calculate Coverage Needs , Progressive

Car Insurance Calculator Quickly estimate auto insurance coverages and limits for you and your vehicle Simplify car insurance before you quote. Your policy's coverage selections depend on what your

[What Is Comprehensive Car Insurance? , Progressive](#)

What is comprehensive auto insurance coverage? Comprehensive coverage is an optional coverage. Though it's optional, auto lenders may require you to carry comprehensive when leasing or financing



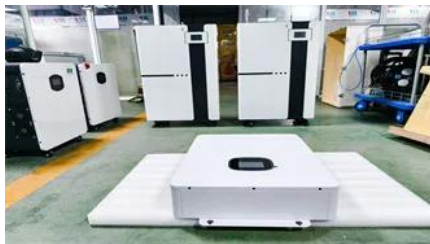


OFF GRID PV POWER SYSTEMS

Design parameters and basic specifications for modules, batteries, inverters, controllers and mounting systems.

[Comprehensive Auto Coverage , Progressive](#)

Learn more about comprehensive car insurance coverage from Progressive, including how it works, what it can cover, and additional benefits.



[Windshield Glass Repair: Windshield Insurance Coverage](#)

Windshield glass repair is a hassle most of us will face at some point. So, how much does it cost to replace a windshield and what insurance do you need?

RV Insurance Coverages , Progressive

Quote today and customize your RV insurance coverage selections to fit your unique needs. Common RV insurance coverages Comprehensive Comprehensive covers your RV for events beyond your



[Does car insurance cover windshield damage?](#)

When does insurance cover windshield replacement? In most cases, you need to carry comprehensive coverage for your car insurance policy to cover a cracked or broken windshield and other types of

A comprehensive review of grid-connected inverter topologies and

This comprehensive review examines grid-connected inverter technologies from 2020 to 2025, revealing critical insights that fundamentally challenge industry assumptions about



[Design Procedure and Development of a 100kw Solar](#)

In this paper a microcontroller based grid tied solar inverter (GTSI) has been designed and developed. Keeping in mind that solar PV power is

Does car insurance cover hail damage?

Comprehensive covers damage to your vehicle from events outside of your control, often including hail and other weather-related damage. If hail damage is covered, your car insurance can pay for the



Off Grid Solar Inverters: Complete 2025 Buyer's Guide & Installation Tips

This comprehensive guide covers everything from fundamental inverter technology to advanced system design, helping you make informed decisions whether you're powering a weekend

[Design & Development for OFF grid Solar](#)

Inverter

A solar inverter converts the variable direct current (DC) output of a photovoltaic (PV) panel into alternating current (AC) that can be fed into a commercial e



Guide to designing off-grid and hybrid solar systems

Detailed guide to the many specifications to consider when designing an off-grid solar system or complete hybrid energy storage system. Plus, a guide to the best grid-interactive and off

Design and Implementation of a 5kW Off-Grid Solar Inverter

In this paper, I present a comprehensive design and implementation of a 5kW off-grid solar inverter utilizing advanced digital signal processing (DSP) technology.



Design and Development of Off-grid Power Inverter

voltaic (PV) power-generation system is proposed. The PV power-generation system used by an inverter supplies a utility sinusoidal source. To obtain the maximum power of the PV power-generation

What is comprehensive insurance?

Comprehensive insurance is defined as coverage for non-collision-related damage to your vehicle, which is why it's sometimes called "other than collision" coverage. " Full coverage," on the other hand, is an





[Collision vs. Comprehensive Insurance , Progressive](#)

Comprehensive vs. collision insurance: What's the difference? Comprehensive and collision are both optional coverages that protect your vehicle, but they differ in the type of incident they cover.

Car Insurance Coverages , Progressive

Auto insurance coverages explained. See a full list of coverages we offer. Plus, we'll explain which car insurance coverages are required or optional.



Contact Us

For catalog requests, pricing, or partnerships, please visit:
<https://bachelorpartyvenue.co.za>