

Communication wireless equipment base station



Overview

In the area of wireless computer networking, a base station is a radio receiver/transmitter that serves as the hub of the local wireless network, and may also be the gateway between a wired network and the wireless network. It typically consists of a low-power transmitter and.

Communication wireless equipment base station



What is a base station?

What is a base station? In telecommunications, a base station is a

What Is A Base Station?

A base station, also known as a cell site or cell tower, is used for wireless communication. It is a fixed location equipped with antennas and other equipment that receives and



What Is Effective Communication? Skills for Work, School, and Life

Discover how communication effectiveness and improving your communication skills can benefit your career, education, and life.

[What is a Base Station in Telecommunications?](#)

Base stations are the backbone of modern telecommunications networks, providing the essential infrastructure for wireless communication. They enable mobile



Base station

OverviewComputer networkingLand surveyingWireless communicationsSee also

In the area of wireless computer networking, a

base station is a radio receiver/transmitter that serves as the hub of the local wireless network, and may also be the gateway between a wired network and the wireless network. It typically consists of a low-power transmitter and wireless router.

Effective Communication: Improving Your Interpersonal Skills

Whether you're trying to improve communication with your romantic partner, kids, boss, or coworkers, learning the following communication skills can help strengthen your interpersonal

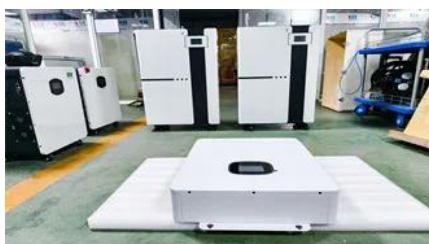


Communication

Communication is commonly defined as the transmission of information. Its precise definition is disputed and there are disagreements about whether unintentional or failed transmissions are included and

What is Communication: Meaning, Types, Importance and Barriers

Understand what is communication with types, importance, & barriers. Learn how good communication improves life & work. Read the full guide and clear examples today!



What is Communication?

What is Communication? At its foundation, Communication focuses on how people use messages to generate meanings within and across various contexts, and is the discipline that studies all forms,

What Is the Role of a Base Station in Wireless Communication?

Base stations are critical components in wireless communication networks, serving as the intermediary between mobile devices and the core network. They play a vital role in ensuring



Understanding Base Stations in Mobile Communication

A base station is a fixed point that enables wireless communication between mobile devices and the network. These stations consist of radio transceivers, antennas,

The Base Station in Wireless Communications: The

Equipped with an electromagnetic wave antenna, often placed on a tall mast, the base station enables communication between mobile terminals



The Benefits of Effective Communication in the Workplace

Effective communication goes beyond simply sharing information - it is the backbone of relationships, collaboration, and leadership. The benefits of effective communication include building

What Is Communication? , Oral Communication

Defining Communication The root of the word "communication" in Latin is *communicare*, which



means to share, or to make common (Weekley, 1967). Communication is defined as the process of



Chapter 1: Introduction to Communication - Keys to Communication:

Unlock your communication skills with the OER, Keys to Communication: An Essential Guide to Communication in the Real World.



[What Is Communication? How to Use It Effectively](#)

Communication is sending and receiving messages through verbal or nonverbal means, including speech, or oral communication; writing and graphical representations (such as

[What Does a Base Station Do and Why Is It Essential](#)

A base station is a fixed point of communication between mobile devices and the wider telecom network. It transmits and receives radio signals,



Communication , Definition, Types, Examples, & Facts , Britannica

Communication, the exchange of meanings between individuals through a common system of symbols. This article treats the functions, types, and psychology of communication. For a



[What Is a Base Station? Definition and](#)



How It Works

What is a Base Station? A base station is a fixed transceiver that serves as the central communication point for mobile devices within a defined geographical area, known as a cell. It is

Contact Us

For catalog requests, pricing, or partnerships, please visit:
<https://bachelorpartyvenue.co.za>