

# Atc uninterruptible power supply



 **TAX FREE**

**1-3MWh**

**BESS**



## Overview

---

These power supplies come in four versions (60W, 120W, 240W, and 480W) and all models offer built-in protection against short-circuit, overload, overvoltage, and over-temperature conditions, with efficiencies ranging from 87% to 93.

## Atc uninterruptible power supply

---



### **AT-CTI vs Academy, pros & cons , StuckMic**

Looking for some input here. I have been preparing myself to attend a CTI program and only recently (through this forum actually) realized that this is potentially unnecessary due to the

### **UPS Based Traffic Signal Controllers**

ATC have developed a range of traffic signal controllers that are integrated with Uninterruptible Power Supply units that provide operational continuity in the



### [ATC Automatic Timing & Controls ATCPWR Series](#)

These power supplies come in four versions (60W, 120W, 240W, and 480W) and all models offer built-in protection against short-circuit, overload, overvoltage, and

### [APC USA , Schneider Electric United States](#)

APC, a flagship brand of Schneider Electric, provides clean uninterruptible backup power and IT physical infrastructure, ensuring data is available, whenever and



### **ATC Power Systems-Home**



We offer a custom line of Military Power Supplies and a Standard Military Product line as well. Please check out our products, and give us a call if there is anything

## Pos and hold (LUAW) with a helicopter?

Just a quick question about LUAW. I work in a twr with no GC so LUAW isnt an option for me. I was asked by a pilot about helicopters being able to LUAW due to their takeoff abilities even



## [Industrial Uninterruptible Power Supply: How It Works](#)

Learn about industrial UPS systems for DOT and ITS operations. Compare standby, line-interactive, and double-conversion power supplies for traffic control.

## Uninterruptible Power Supplies Archives

Operation from worldwide AC or DC power sources: - 85-264VAC, 47-440Hz to include 115VAC / 230VAC, AC power in all foreign countries, AC generator, AC

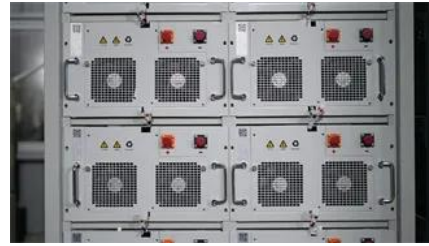


## [ATCPWR Series Power Supplies for OEMs From: Atc-Diversified](#)

Designed for ultimate reliability and efficiency, these compact DIN rail-mounted power supplies are available in four versions (60W, 120W, 240W, and 480W). Perfect for manufacturers,

### [ATCPWR Series 24V Industrial Power Supplies](#)

These power supplies come in four versions (60W, 120W, 240W, and 480W) and all models offer built-in protection against short-circuit, overload, overvoltage, and



### [ATCPWR 24VDC DIN-Rail-Mount Power Supplies](#)

These models range from 60W to 480W and are available with an AC universal supply voltage of 90V AC to 264V AC, and are cULus listed/UL 508 approved. Multiple protections are built



### **Uninterruptible power supply**

An uninterruptible power supply (UPS) or uninterruptible power source is an electrical apparatus that provides emergency power to a load when the input

## **Contact Us**

---

For catalog requests, pricing, or partnerships, please visit:  
<https://bachelorpartyvenue.co.za>